

# On The Disk...

**A run-down of what's included on the free disk with this issue**

*Collated and tested by Mike Orriss*

➤ **RTREG32**

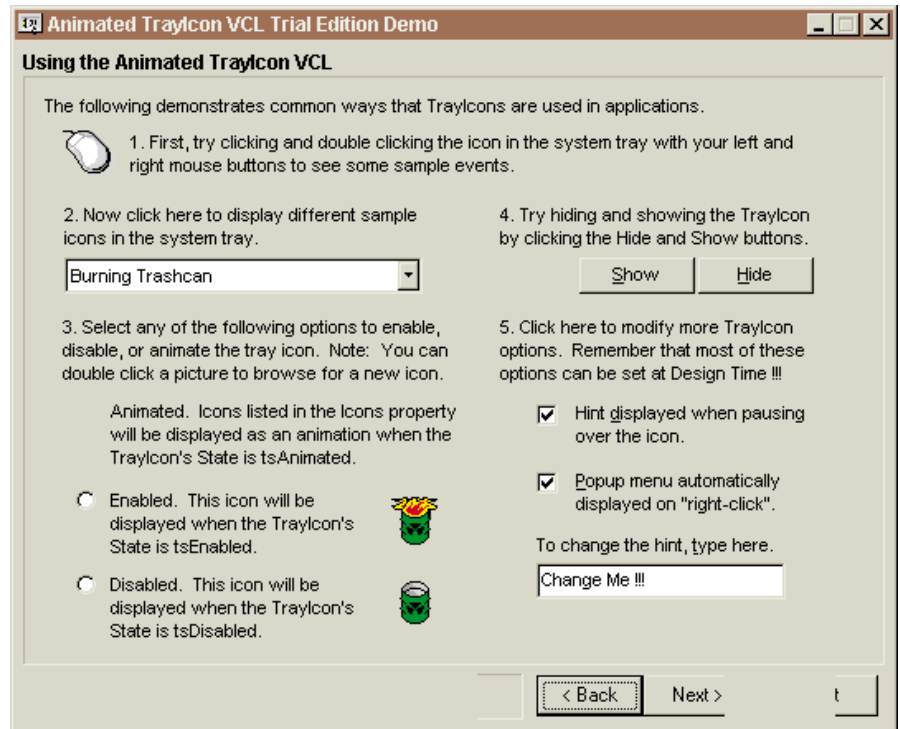
The RT Registration Control is a library unit (DCU for Delphi, otherwise DLL) containing functions to protect shareware and other software against unauthorised use: files are unlocked with a unique registration key. You can save encrypted information about users somewhere in the system and a count and/or date lock in order to make an evaluation copy. This means shareware can be marketed electronically through the internet because the same shareware version can be turned into a registered version. Another highlight is a support for leased/rented software through linking the registration key with the next payment date.

➤ **ORANET23**

This contains two documents put together by George Pujol as a guide to BDE/Oracle connectivity.

The ORA7316.DOC file describes all the necessary steps for connecting to an Oracle Workgroup Server Version 7.1, 7.2, or 7.3 for NetWare or Windows NT using the Borland Database Engine and Oracle SQL\*Net version 2.1, 2.2, or 2.3 using 16-bit drivers.

The ORA7332.DOC file contains similar information but using 32-bit drivers. This configuration works for the SPX and TCP/IP protocols in the NetWare version and the SPX,



TCP/IP, and Named Pipes protocols in the Windows NT version. 16 and 32-bit ODBC drivers have also been successfully tested for the Oracle 7.3 version. All of the the information is current as of July 1st, 1997.

➤ **PGTRAY3X**

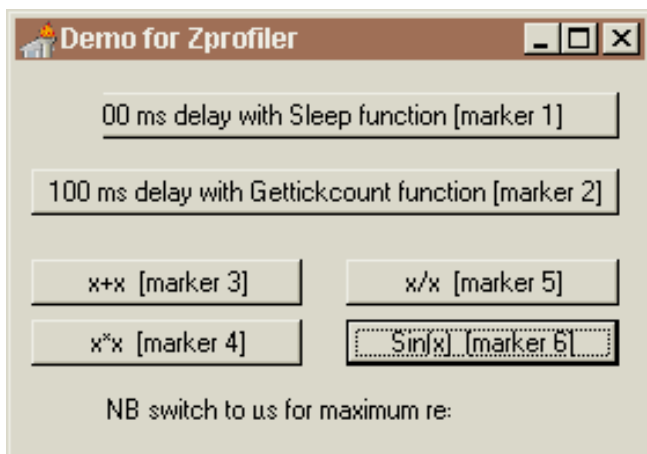
The Animated TrayIcon VCL is a component you can use in Delphi 1, 2, and 3 as well as C++ Builder 1 to add icons to the Windows 95 or NT 4 system tray.

➤ *Some of the options available for the Animated Tray Icon*

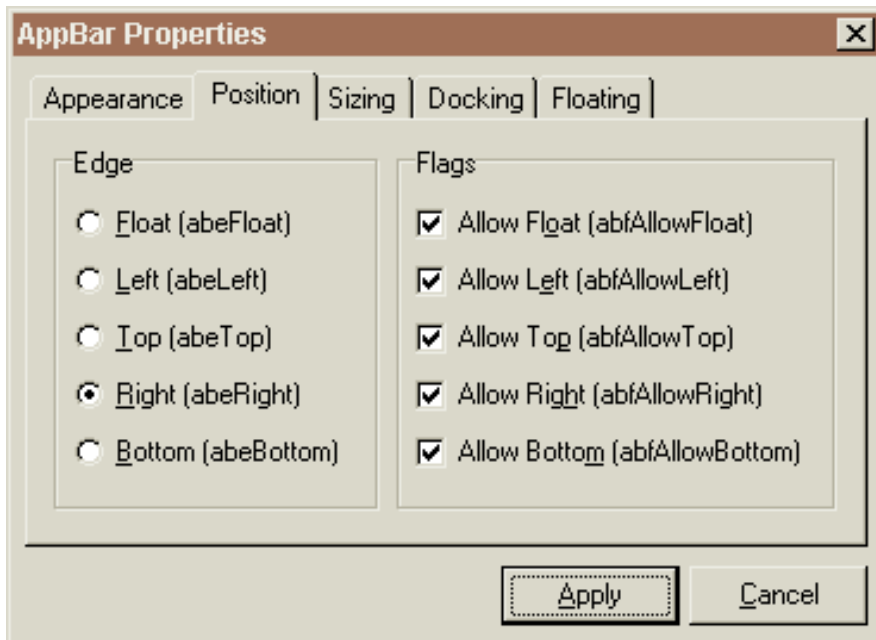
**program timing properties**

timing units:  
 seconds (s)      clear      about  
 milliseconds (ms)      clock : 175 MHz  
 microseconds (µs)      recalibrate clock

marknr	passes	time /µs	mean /µs
1	20	1955106.90	97755.35
2	10	1069955.60	106995.56
3	10	5.03	0.50
4	10	5.03	0.50
5	10	4.72	0.47
6	10	17.31	1.73
7	0	0.00	
8	0	0.00	
9	0	0.00	
10	0	0.00	
11	0	0.00	
12	0	0.00	
13	0	0.00	
14	0	0.00	
15	0	0.00	
16	0	0.00	



➤ *Left and Right: ZProfiler in action*



➤ *Some of AppBar's properties, which make it easy to have exactly the style you want!*

➤ **Z\_PROF**

ZProfiler is a utility component that enables the assessment of execution times of code fragments with a 0.01 microsecond resolution. It is based on the CPU clock of Pentium computers.

➤ **APPBAR11**

The TAppBar class is a TForm derived class for Delphi 3 that lets your form to behave like an Application Desktop Toolbar (appbar short), which is a window that attaches itself to an edge of your screen. The

shell's taskbar window is a well-known example. Though appbars are usually docked on an edge of the user's screen, they can also float. To make room for an appbar that's docked, the Windows 95/NT shell shrinks the size of the screen's work area.

➤ **Important Note!**

Always, but always make a backup copy of your Delphi 1 or 2 component library file before you take the plunge and install any new component into Delphi! Sometimes component installation can trash your component library and you will then be left with an inoperative Delphi will have to re-add all your extra components.

➤ **Send In Your Code...**

If you have some carefully crafted routines, why not send them in for evaluation by mail or (zipped up) by email to our Disk Editor, Mike Orriss, at [mjo@compuserve.com](mailto:mjo@compuserve.com). We do consider all submissions for use on future disks.